



Digital Health Care Solutions

PM30hc Mobile Computer -
made for the convenience and
safety of healthcare providers.



01

RELY ON STABLE COMMUNICATION WITH YOUR STAFF - VIA LTE OR WIFI

When a patient's life is at stake, direct and error-free communication is a crucial factor. With integrated LTE and Wi-Fi technology, PM30hc stays connected when you need it. Update patient records, track lab results, and discuss the next steps of treatment with your staff.

Breaks in connection can prove hugely costly and cause serious consequences. To avoid disruptions, PM30hc's Qualcomm® chipset contains a powerful Wi-Fi module, supporting both 2.4 and 5GHz frequencies. Additionally, thanks to Wi-Fi roaming, you can move freely within your premises, while PM30hc automatically connects to the nearest access point with the strongest signal. It prevents users from having to re-log back into a network with the same SSID when it associates with a new access point. It is possible to specifically set the values for roaming aggressiveness based on the network environment where PM30hc is being used.

A dedicated Push-to-talk (PTT) button lets you reach out to a single person or even a group of people at an instant. It works similar to a walkie-talkie: One person transmits, the others receive. This adds a significant advantage when handling time-critical information.





02

722,000 infections are contracted every year in US hospitals - good hygiene helps against the spread of germs and reduces the risk of infections¹.

Mobile computers used in the medical field need to be protected against sanitizers. PM30hc's housing is made of a special material and is resistant to alcohol & ethanol.

According to CDC, healthcare providers clean their hands as many as 100 times during a 12-hour shift. Aiming to reduce the risk of infections for both patients and staff, good hand hygiene is extremely important. But also equipment and electronic devices used in the hospital environment are covered in germs which can cause serious infections. Cleaning those devices often result in deterioration, since materials are not designed to be exposed to the heavy usage of sanitizers. That's why healthcare facilities trust PM30hc: Its corrosion resistant housing is resistant to various types of disinfectant, including chlorine or 70% alcohol solutions.

¹According to CDC's Clean Hands Count Campaign

03

EXCEPTIONAL COMPUTING POWER

Despite its small form factor, PM30hc comes with the latest Android™ 10 version, and the possibility to upgrade to newer versions. An incredibly fast clock speed of 2.2GHz and 4GB RAM / 64GB ROM run all of your apps seamlessly. The PTT button on the side of the device lets you communicate with your staff instantly. Of course, PM30hc can also be used for phone calls via the high-speed 4G LTE modem. Storage is extendable with SD card.



WIRELESS CHARGING

PM30hc can be charged wirelessly with compatible chargers (sold separately). When charging by USB-C, Qualcomm® Quick Charge 3.0™ boosts PM30hc's battery level to over 50% in less than an hour.



OPTICAL FINGERPRINT READER AND POGO PIN

When confidential patient data and lab results have to be protected, PM30hc's integrated optical fingerprint reader on the back of the housing adds a layer of security via user identification. Below the fingerprint reader is a pogo pin connector for additional accessory, such as a UHF reader extension or a gun handle.



04

Typically, barcode-enabled devices come in a much larger form factor when integrated into a mobile computer. If a smaller, more compact device is required, often times a separate barcode scanner will be used in addition to a smartphone. PM30hc combines both worlds: It is a compact, light weight rugged mobile computer (165g, 5.8oz) with an integrated super slim 2D barcode imager engine from Honeywell.

INTEGRATED BARCODE SCANNER

Utilizing barcode technology in the health care industry brings many advantages: Ensuring patient safety, reduced risk of false medication, improved efficiency for inventory tasks, and many more - from admission to discharge of a patient.

On a daily basis, healthcare facilities deal with patient admission, trackings assets and inventory, and validating information. In an environment where every second matters, practitioners rely on the right data at the right time. Using barcode technology helps to organize all processes around the patient: Once admitted, the patient receives a wristband with a barcode, containing all relevant information for doctors and nurses. That barcode is linked to the patient's Electronic Health Record, or EHR, which is constantly updated when a treatment is ordered or medication is changed.



PM30hc's scan engine has 64% less volume than the next smaller engine, and captures data at a high performance. Low power consumption extend the battery life, reducing the risk of downtime.

VERSATILE ACCESSORIES

The functionality of PM30hc can be further expanded with a variety of accessories. From UHF RFID to an external battery case, PM30hc got it.



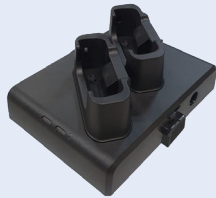
Gun Handle
Integrated scan button for fast and accurate scanning



RF300
UHF RFID extension for PM30hc



Wireless Charger
For convenient charging of PM30hc



Dual Slot Cradle
Up to 3 cradles can be connected to charge 6 PM30hc simultaneously



Single Slot Cradle
Works with PM30hc, PM30hc combined with PMBooster, and even PM30 with gun handle or RF300



PMBooster™
Adding another 3,250mAh of battery power to PM30hc



05

Tracking assets, materials, and inventory is a daily job in a hospital. Using barcode technology helps to improve accuracy and lowers the risk of human error.

For the complete set of accessories, visit www.pointmobile.com

06

PM30hc - At a glance

Made for the convenience and safety of healthcare providers, PM30hc is a compact rugged mobile computer with a bright screen, integrated 2D scan engine, fingerprint reader, and wireless charging. For a more detailed technical overview, check out the chart below.

Main CPU	Qualcomm® Octa-core @2.2GHz
Operating System	Android 10, CTS & GMS certified, upgradable
Memory & Storage	4GB RAM / 64GB RAM Support for Micro SD cards with up to 512GB
Dimensions	142.5mm L x 70.8mm W x 10.85mm D 5.61in. L x 2.78in. W x 0.42in. D
Weight	165g (5.8oz)
Display	4.7", IPS panel, HD, LED backlight, 500nits typical, Corning Gorila glass
Power	3,250mAh Li-ion battery, non removable Wireless charging with Qi standard
GPS	Optional, support for GPS, GLONASS, Galileo and Beidou
Wireless	WWAN: EDGE/GPRS/GSM: 900/1800/850/1900 WCDMA/LTE
	WLAN: IEEE 802.11a/b/g/n/ac/d/h/i/k/r/v, 1x1 SISO Data Rates 2.4GHz & 5GHz, Fast Roam 802.11r
	WPAN: Bluetooth Class I, Ver 5.0, BLE support
Data Capture	Ultra slim 1D/2D barcode scan engine N2601
	NFC: ISO/IEC 14443 A, ISO/IEC 14443 B, ISO/IEC 15693, Mifare Classic 1K/4K, and more
Camera	Rear: 8MP with LED flash Front: 5MP
Biometrics	Optical fingerprint sensor integrated on the back side of the device
Ruggedness	1.5m (5ft) to concrete (MIL-STD 810G) IP67
Hazard Prevention	Corrosion resistant to various types of disinfectant including chlorine or 70% alcohol

Certified CE, CB, RCM, KC, IC, FCC, CEC, CU, FAC
Environmental: RoHS III & WEEE compliant

PM30hc carries 1 (one) year-warranty period from the date of purchase against defective materials and manufacturing defects.



For more information, visit www.pointmobile.com or contact us at pm_sales1@pointmobile.com

Copyright © 2021 Point Mobile Co., Ltd.

Android is a trademark of Google LLC.
The Android robot is reproduced or modified from work created and shared by Google and used according to terms described in the Creative Commons 3.0 Attribution License.
The Wi-Fi Alliance Member Logo is a trademark of Wi-Fi Alliance®.

V1.1 Jul2021_RoW

